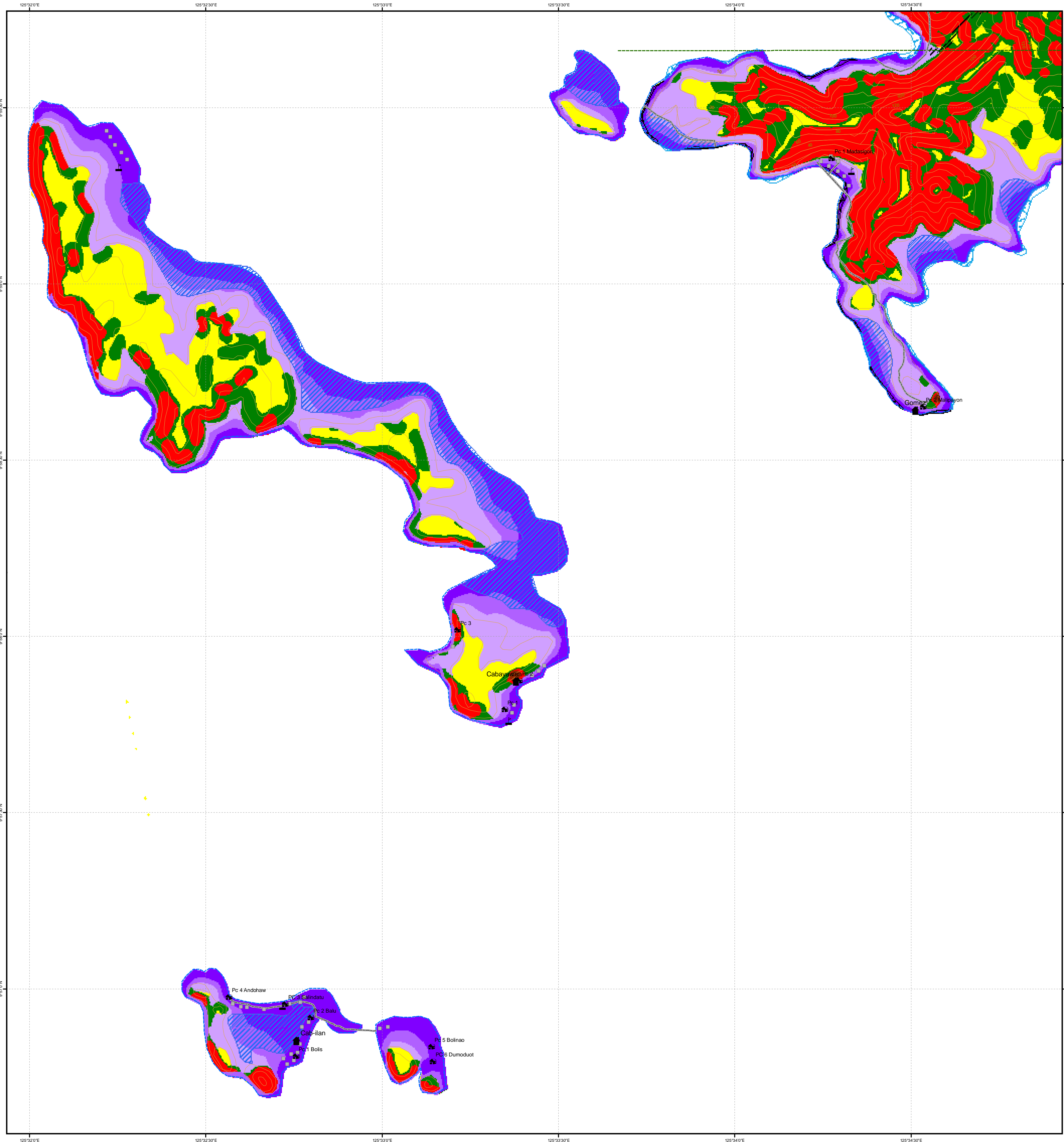


# GEOHAZARD MAP

## GOMEZ QUADRANGLE

Coverage:  
Mun. Dinagat  
Brgys. Cabayawan  
Cab-ilan  
Gomez



### LEGEND

- Municipality
- Barangay
- Purok
- School
- Health Facility
- Building
- Bridge
- Scarp
- Road
- Municipal Boundary
- Contour (20m)
- Shoreline
- River & Creek
- Mangrove Area
- Quarry Area
- Coastal Erosion
- Coastal Accretion
- Accumulation Zone
- Tidal Flooding

### FLOOD PRONE SUSCEPTIBILITY

- High
- Moderate
- Low

### LANDSLIDE SUSCEPTIBILITY

- Very High
- High
- Moderate
- Low

### LANDSLIDE

**VERY HIGH**  
Areas usually with steep to very steep slopes and underlain by weak materials. Recent landslides, escarpments and tension cracks are present. Human initiated effects could be an aggravating factor.

**HIGH**  
Areas usually with steep to very steep slopes and underlain by weak materials. Areas with numerous old and inactive landslides.

**MODERATE**  
Areas with moderately steep slopes. Soil creep and other indications for possible landslide occurrence are present.

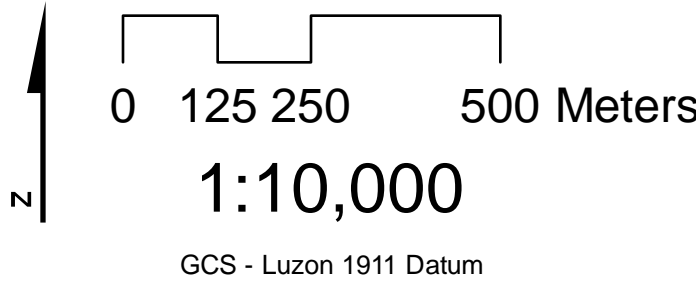
**LOW**  
Gently sloping areas with no identified landslides.

### FLOOD

**HIGH**  
Areas for which the combination of factors is likely to create adverse flood and inundation problems. This category includes areas along large streams with very small channel slopes and broad floodplains; landforms of topographic lows, particularly active river systems, deltas, abandoned river channels, and areas adjacent to river banks; also include portions of the river system where channels are perched due to repeated deposition of sediments; and part of the coastal areas affected by storm surge and fluctuating sea tide levels.

**MODERATE**  
Areas for which the combination of factors is less likely to create serious flood problems. These areas are the less-inundated of the floodplains, deltas, river terraces, and old channels; also include the less flood-prone areas near the coast.

**LOW**  
Areas for which the combination of factors is unlikely to create serious flood problems; include low lying topographic landforms least affected by flood and inundation.



DINAGAT PROVINCE INDEX MAP



Department of Environment and Natural Resources  
MINES AND GEO-SCIENCES BUREAU

Caraga Regional Office No. 13  
Km. 02, National Highway, Surigao City  
Tel 086-8265256  
<http://www.mgbr13.ph> info@mgbr13.ph