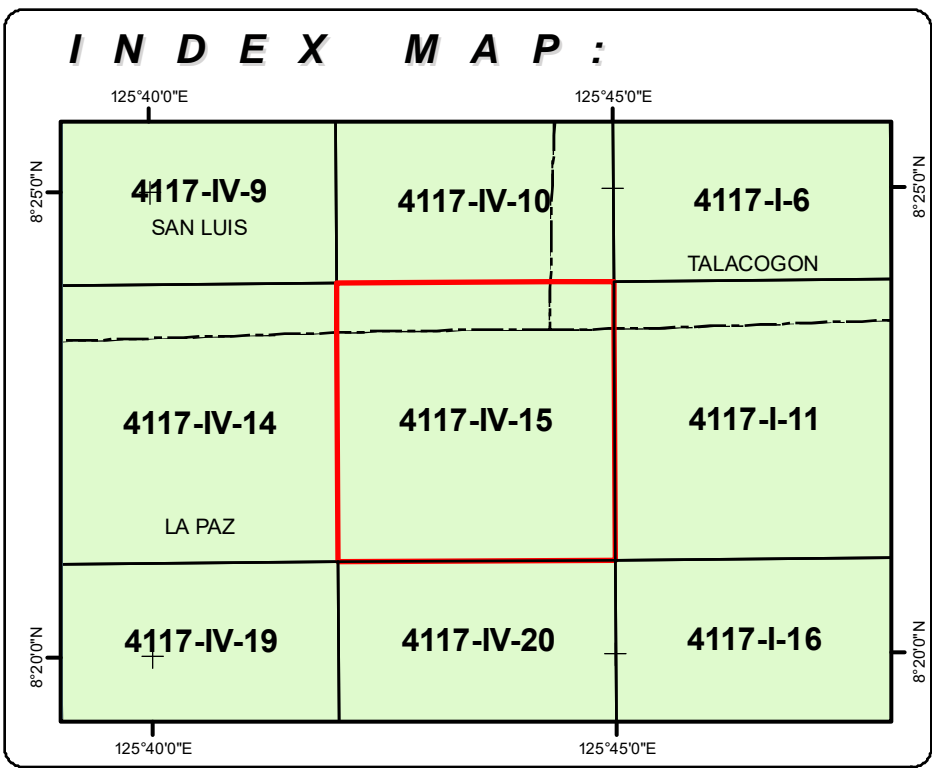




DETAILED LANDSLIDE AND FLOOD HAZARD MAP OF  
SAN LUIS, LA PAZ, AND TALACOGON,  
AGUSAN DEL SUR, PHILIPPINES  
4117-IV-15 COMOTA QUADRANGLE



L E G E N D :

- |                    |                          |                                 |
|--------------------|--------------------------|---------------------------------|
| Main road          | Poblacion                | Barangay center location        |
| Secondary road     | So. Magaling (Poblacion) | Purok/Sitio location (Barangay) |
| Track; trail       | School                   |                                 |
| River              | Hospital                 |                                 |
| Municipal boundary | Church                   |                                 |
| Contour (meter)    | Proposed relocation site |                                 |

Landslide

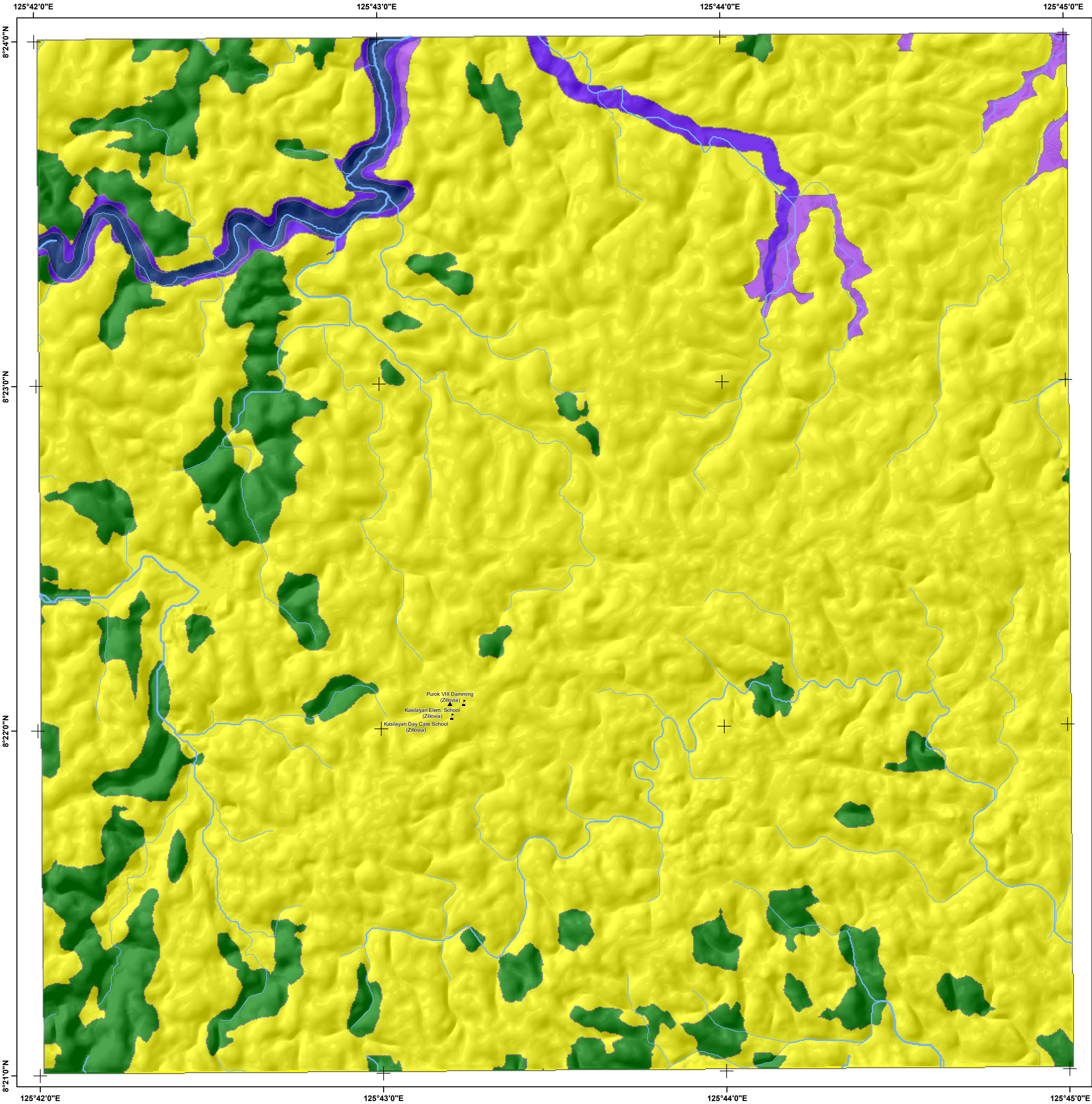
- |   |   |
|---|---|
|   | <b>Very high landslide susceptibility</b>       |
| Areas usually with steep to very steep slopes and underlain by weak materials. Recent landslides, escarpments and tension cracks are present. Human initiated effects could be an aggravating factor. |   |
|   | <b>High landslide susceptibility</b>            |
| Areas usually with steep to very steep slopes and underlain by weak materials. Areas with numerous old/inactive landslides.   |   |
|   | <b>Moderate landslide susceptibility</b>        |
| Areas with moderately steep slopes. Soil creep and other indications of possible landslide occurrence are present.  |   |
|   | <b>Low landslide susceptibility</b>             |
| Gently sloping areas with no identified landslide.  |   |
|   | <b>Debris flow / Possible accumulation zone</b> |
| Areas that could be affected by landslide debris.   |   |

- |   |                   |
|---|-------------------|
| Active landslide  | Creep             |
| Inactive landslide  | Tension crack     |
| Landslide area with mitigating measure                      | Gully             |
| Rock fall/Rock slide prone area                             | Riverbank erosion |
| Old landslide deposits                                      |                   |
| Recent landslide deposits                                   |                   |
| Areas susceptible to ground subsidence/sinkhole development |                   |

Flood

- |  |                                       |
|--|---------------------------------------|
|  | <b>Very high flood susceptibility</b> |
| Areas likely to experience flood heights of greater than 2 meters and/or flood duration of more than 3 days. These areas are immediately flooded during heavy rains of several hours; include landforms of topographic lows such as active river channels, abandoned river channels and area along river banks; also prone to flashfloods.         |                                       |
|  | <b>High flood susceptibility</b>      |
| Areas likely to experience flood heights of greater than 1 up to 2 meters and/or flood duration of more than 3 days. These areas are immediately flooded during heavy rains of several hours; include landforms of topographic lows such as active river channels, abandoned river channels and area along river banks; also prone to flashfloods. |                                       |
|  | <b>Moderate flood susceptibility</b>  |
| Areas likely to experience flood heights of greater than 0.5m up to 1 meter and/or flood duration of 1 to 3 days. These areas are subject to widespread inundation during prolonged and extensive heavy rainfall or extreme weather condition. Fluvial terraces, alluvial fans, and infilled valleys are areas moderately subjected to flooding.   |                                       |
|  | <b>Low flood susceptibility</b>       |
| Areas likely to experience flood heights of 0.5 meter or less and/or flood duration of less than 1 day. These areas include low hills and gentle slopes. They also have sparse to moderate drainage density.   |                                       |

- |                                  |                       |
|----------------------------------|-----------------------|
| Direction of rising floodwater   | Flood depth (meter)   |
| Direction of receding floodwater | Flashflood exit point |



DEPARTMENT OF ENVIRONMENT AND NATURAL RESOURCES  
**MINES AND GEOSCIENCES BUREAU**  
North Avenue, Diliman, Quezon City

ALL RIGHTS RESERVED  
PUBLISHED DECEMBER 2015

Data Sources :  
MGB Geohazard Assessment Team  
Lands Geological Survey Division  
Geosciences Division MGB Regional Office XIII  
National Mapping and Resource Information Authority

GIS Processing :  
Lands Geological Survey Division

Coordinate System :  
Spheroid : Clark 1866  
Projection : Transverse Mercator  
Datum : Luzon 1911

Mapping scale 1:10,000