

	Main road		Barangay center location
	Secondary road		Purok/Sitio location (Barangay)
	Track; trail		
	River		
	Municipal boundary		
	Contour (meter)		

Very high landslide susceptibility

Areas usually with steep to very steep slopes and underlain by weak materials. Recent landslides, escarpments and tension cracks are present. Human initiated effects could be an aggravating factor.

High landslide susceptibility

Areas usually with steep to very steep slopes and underlain by weak materials. Areas with numerous old/inactive landslides.

Moderate landslide susceptibility

Areas with moderately steep slopes. Soil creep and other indications of possible landslide occurrence are present.

Low landslide susceptibility

Gently sloping areas with no identified landslide.

Debris flow / Possible accumulation zone

Areas that could be affected by landslide debris.

Active landslide
 Inactive landslide
 Landslide area with mitigating measure
 Rock fall/Rock slide prone area
 Old landslide deposits
 Recent landslide deposits
 Areas susceptible to ground subsidence/sinkhole development

Creep
 Tension crack
 Gully
 Riverbank erosion

Very high flood susceptibility

Areas likely to experience flood heights of greater than 2 meters and/or flood duration of more than 3 days. These areas are immediately flooded during heavy rains of several hours; include landforms of topographic lows such as active river channels, abandoned river channels and area along river banks; also prone to flashfloods.

High flood susceptibility

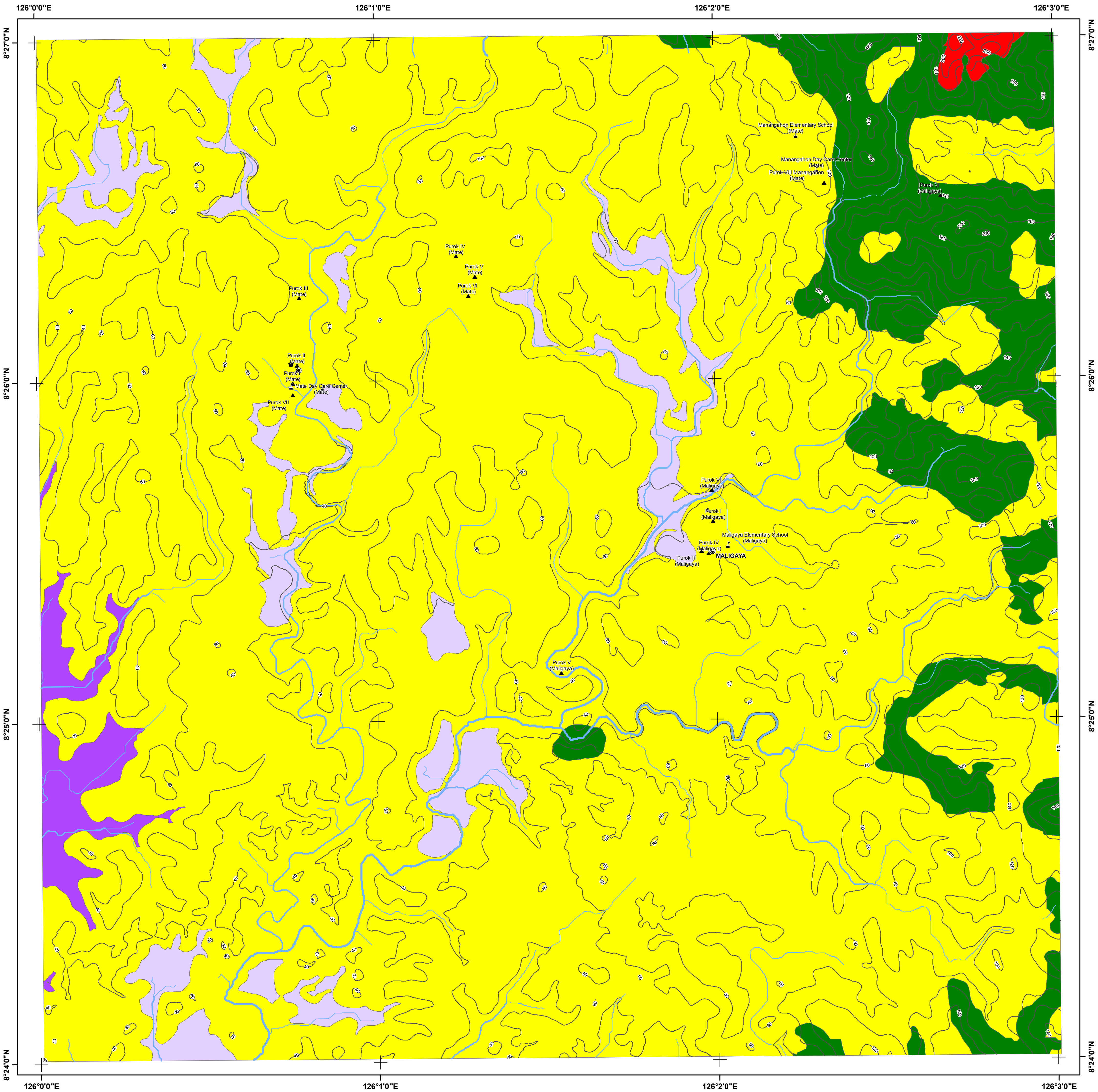
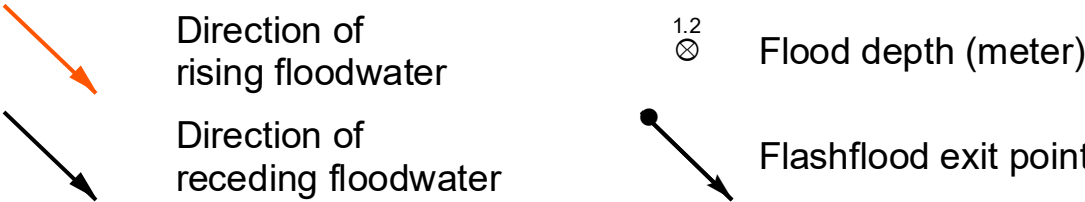
Areas likely to experience flood heights of greater than 1 up to 2 meters and/or flood duration of more than 3 days. These areas are immediately flooded during heavy rains of several hours; include landforms of topographic lows such as active river channels, abandoned river channels and area along river banks; also prone to flashfloods.

Moderate flood susceptibility

Areas likely to experience flood heights of greater than 0.5m up to 1 meter and/or flood duration of 1 to 3 days. These areas are subject to widespread inundation during prolonged and extensive heavy rainfall or extreme weather condition. Fluvial terraces, alluvial fans, and infilled valleys are areas moderately subjected to flooding.

Low flood susceptibility

Areas likely to experience flood heights of 0.5 meter or less and/or flood duration of less than 1 day. These areas include low hills and gentle slopes. They also have sparse to moderate drainage density.



ALL RIGHTS RESERVED
PUBLISHED DECEMBER 2015

Data Sources :
MGB Geohazard Assessment Team
Lands Geological Survey Division
Geosciences Division MGB Regional Office XIII
National Mapping and Resource Information Authority

GIS Processing :
Lands Geological Survey Division

Coordinate System :

Spheroid	:	Clark 1866
Projection	:	Transverse Mercator
Datum	:	Luzon 1911

Mapping scale 1:10,000