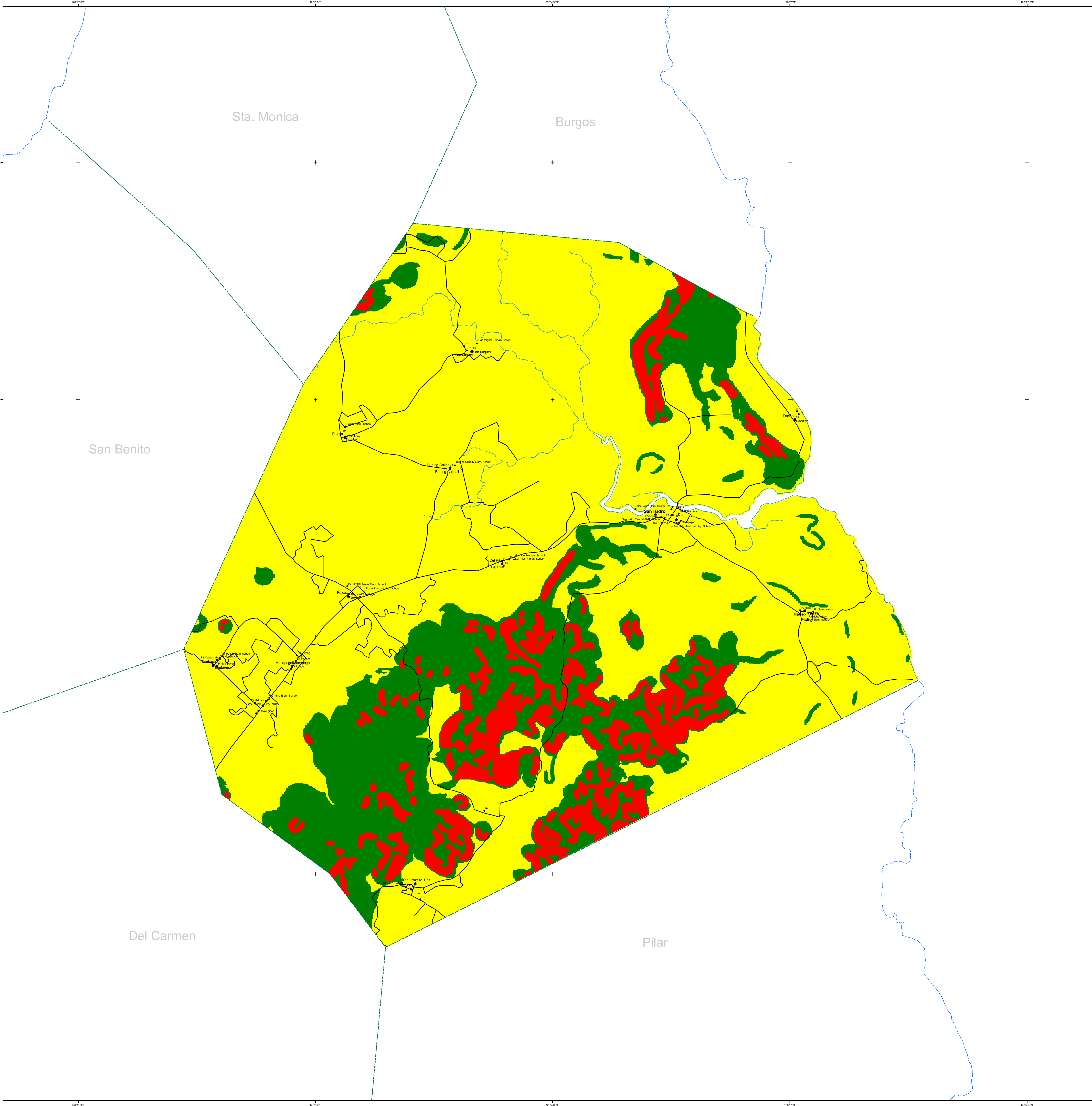


LANDSLIDE SUSCEPTIBILITY MAP

MUNICIPALITY OF SAN ISIDRO

Province of Surigao del Norte

(10k Baseline Data)



LEGEND:

- Municipality
- Barangay
- Purok
- School
- Daycare Center
- Health Facility
- Regional Boundary
- Provincial Boundary
- Municipal Boundary
- Shoreline
- River & Creek
- Road Network
- Sink Hole
- Accumulation Zone
- Scarp & Tension Crack

- #### LANDSLIDE SUSCEPTIBILITY
- Very High
 - High
 - Moderate
 - Low

LANDSLIDE

VERY HIGH
Areas usually with steep to very steep slopes and underlain by weak materials. Recent landslides, escarpments, and erosion cracks are present. Human induced effects could be an aggravating factor.

HIGH
Areas usually with steep to very steep slopes and underlain by weak materials. Areas with numerous old and inactive landslides.

MODERATE
Areas with moderately steep slopes. Soil creep and other indications for possible landslide occurrence are present.

LOW
Gently sloping areas with no identified landslides.

ACCUMULATION ZONE
Areas that could be affected by landslide debris.

FLOOD

VERY HIGH
Areas likely to experience flood heights of greater than 2 meters and/or flood duration of more than 3 days. These areas are immediately flooded during heavy rains of general flood include wetlands of topographic lows such as active river channels, abandoned river channels and areas along river banks, also prone to subsidence.

HIGH
Areas likely to experience flood heights of 1.0 to 2.0 meters and/or flood duration of more than 3 days. These areas are immediately flooded during heavy rain of general flood. Flood heights of topographic lows such as active river channels, abandoned river channels and areas along river banks, also prone to subsidence.

MODERATE
Areas likely to experience flood heights between 0.5 and 1 meters and/or flood duration of 1 to 3 days. These areas are subject to moderate flooding during prolonged and intensive heavy rainfall or extreme weather conditions. Flood heights, abundant here, and related valleys are areas moderately subjected to flooding.

LOW
Areas likely to experience flood heights of 0.5 meter or less and/or flood duration of less than 1 day. These areas include low-lying and gentle slopes. They also have space to moderate drainage density.

