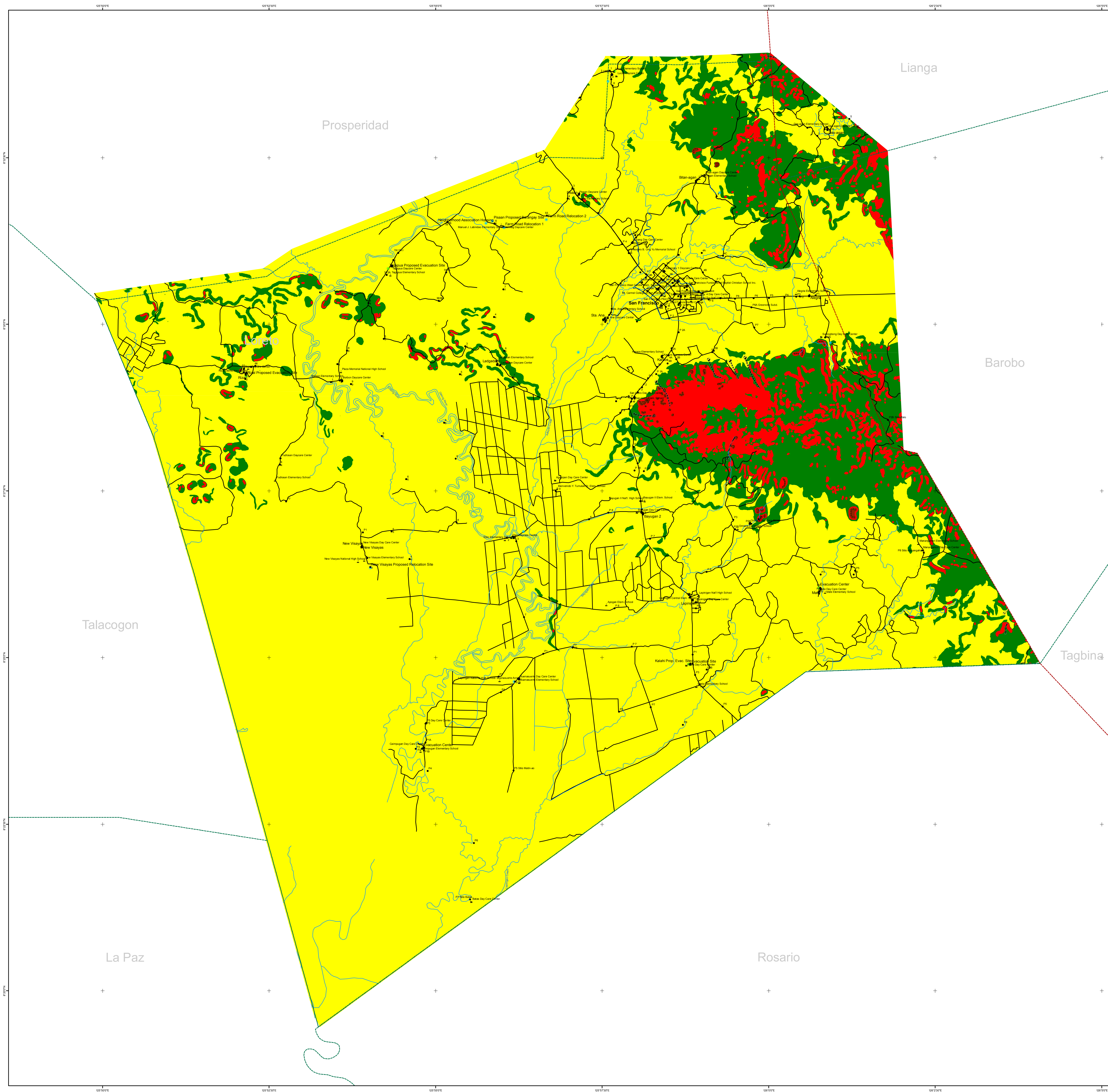


# LANDSLIDE SUSCEPTIBILITY MAP

## MUNICIPALITY OF SAN FRANCISCO

Province of Agusan del Sur  
(10k Baseline Data)



### LEGEND:

- Municipality
- Barangay
- Purok
- School
- Daycare Center
- Health Facility
- Proposed Evacuation
- Proposed Relocation
- Regional Boundary
- Provincial Boundary
- Municipal Boundary
- Shoreline
- River & Creek
- Road Network
- Accumulation Zone
- Scarp & Tension Crack

### LANDSLIDE SUSCEPTIBILITY

- Very High
- High
- Moderate
- Low

### LANDSLIDE

**VERY HIGH**  
Areas usually with steep to very steep slopes and underlain by weak materials. Recent landslides, movements, and failure cases are present. Human seismic effects could be an aggravating factor.

**HIGH**  
Areas usually with steep to very steep slopes and underlain by weak materials. Areas with numerous old and inactive landslides.

**MODERATE**  
Areas with moderately steep slopes. Soil creep and other indications for possible landslide occurrence are present.

**LOW**  
Gently sloping areas with no identified landslides.

**ACCUMULATION ZONE**  
Areas that could be affected by landslide debris.

### FLOOD

**VERY HIGH**  
Areas likely to experience flood heights of greater than 2 meters and/or flood duration of more than 3 days. These areas are immediately flooded during heavy rains of several hours, include landforms of topographic lows such as active river channels, abandoned river channels and areas along river banks, also prone to flashfloods.

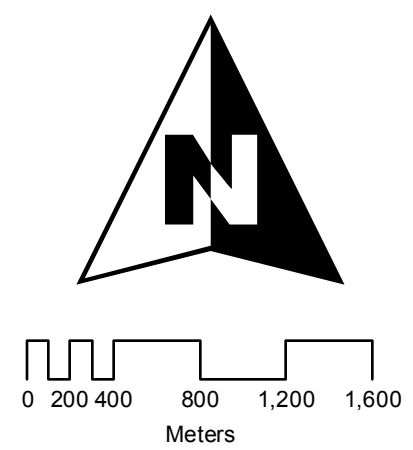
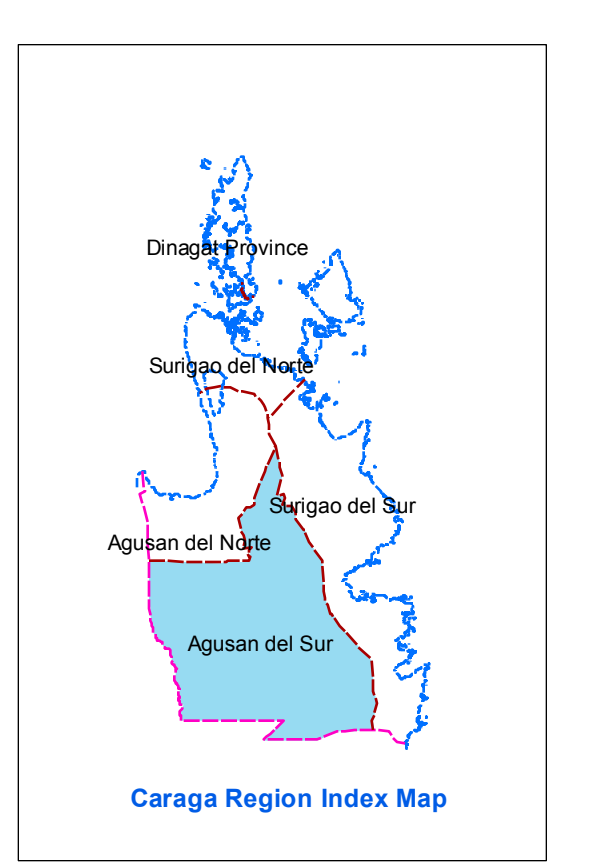
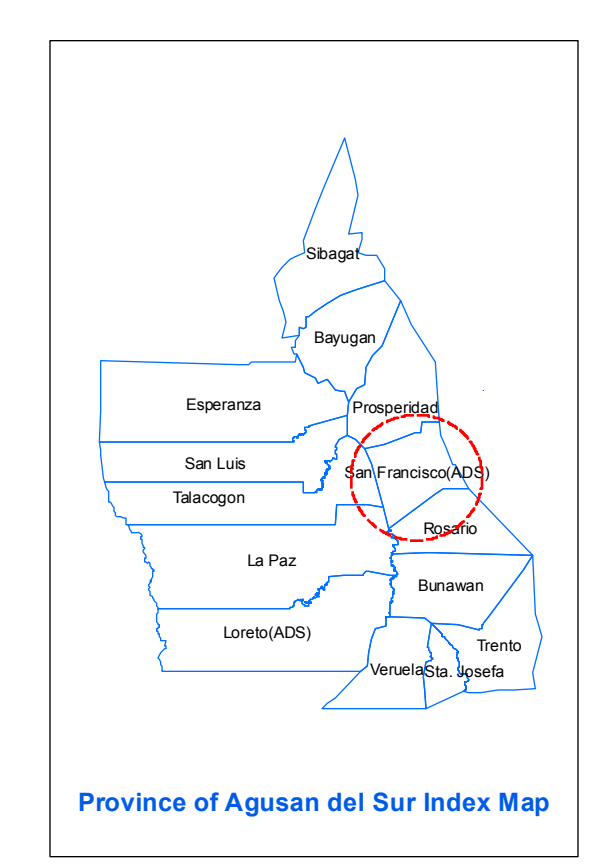
**HIGH**  
Areas likely to experience flood heights of 1.0 to 2.0 meters and/or flood duration of 1 to 3 days. These areas are subject to immediate flooding during prolonged and excessive heavy rainfall in extreme weather condition. Fluvial channels, stream banks, and other valleys are areas moderately subjected to flooding.

**MODERATE**  
Areas likely to experience flood heights between 0.5 and 1 meters and/or flood duration of 1 to 3 days. These areas are subject to immediate flooding during prolonged and excessive heavy rainfall in extreme weather condition. Fluvial channels, stream banks, and other valleys are areas moderately subjected to flooding.

**LOW**  
Areas likely to experience flood heights of 0.5 meter or less and/or flood duration of less than 1 day. These areas include low hills and gentle slopes. They also have spaces to moderate change severity.



Department of Environment and Natural Resources  
**MINES AND GEOSCIENCES BUREAU**  
Caraga Regional Office No. XIII  
Tel. No. (086) 826-8286  
http://www.mgbr13.ph info@mgbr13.ph



1:35,000  
GCS - Luzon 1911